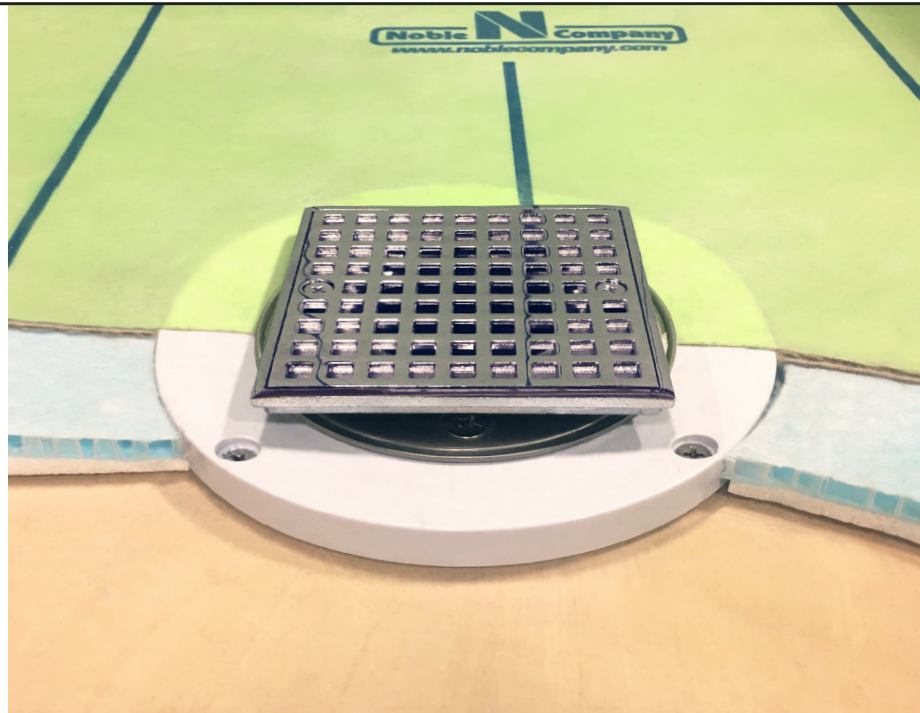


ProBase® II Multi-Slope

Shower Base Kit

www.noblecompany.com



Drain sold separately

KIT INCLUDES: Pre-Sloped Base, ValueSeal® Waterproofing Sheet Membrane, Solid Curbs, Thin-Line™ Installation Accessories, and NobleSealant

Patents Pending

Multi-Slope Shower Base

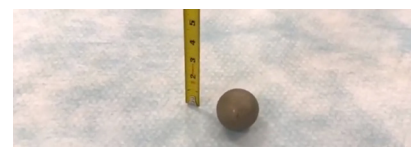
Quick and easy installation with modified thin-set mortar or NobleBond EXT to provide the code-required slope to drain. Base is designed to provide a smooth transition to Noble Company's Freestyle Thin-Bed™ Drain. Kit includes Pre-Sloped Base, ValueSeal Waterproofing Sheet Membrane, Solid Curbs, Thin-Line Installation Accessories, and NobleSealant.

BENEFITS

- Multi-Directional slope to drain
- Superior impact resistance
- Sloped honeycomb and foam composite base
- Noble waterproofing sheet membrane bonds directly to base
- Center or offset drain location
- Integration with FreeStyle Thin-Bed Drain
- Easily modified to various shower configurations
- Install with NobleBond EXT or modified thin-set mortar

STANDARD SIZES:

- 32" x 60" End Drain Base Kit
- 32" x 60" Center Drain Base Kit
- 38" x 38" Center Drain Base Kit
- 48" x 48" Center Drain Base Kit
- 48" x 72" Center Drain Base Kit
- 72" x 72" Center Drain Base Kit
- Custom sizes available with minimum quantity order



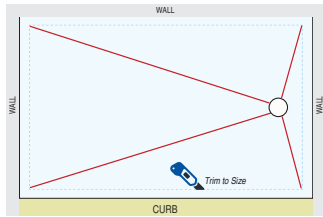
VIEW BALL DROP IMPACT
VIDEO ON PRO-BASE II
TOP SURFACE



ProBase® II Multi-Slope

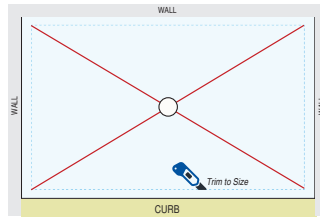
Shower Base Kit

VIEW MORE PRODUCT
DETAILS, VIDEOS, AND
DIAGRAMS ONLINE



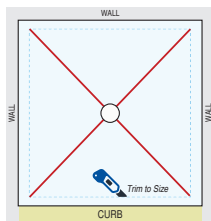
32" x 60" End Drain Kit
#4610

INCLUDES: 32"x60" Composite Base,
132 sf of ValueSeal, (2) 30" curbs,
Thin-Line Combo Pack, and NobleSealant



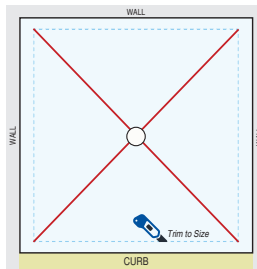
32" x 60" Center Drain Kit
#4620

INCLUDES: 32"x60" Composite Base,
132 sf of ValueSeal, (2) 30" curbs,
Thin-Line Combo Pack, and NobleSealant



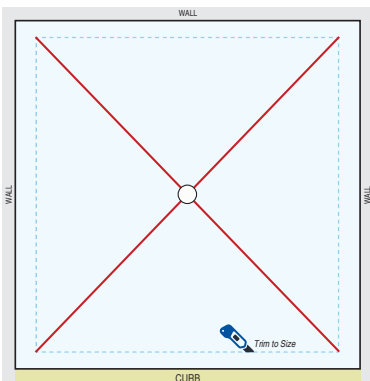
38" x 38" Center Drain Kit
#4420

INCLUDES: 38"x38" Composite Base,
150 sq ft of ValueSeal, (1) 48" curb,
Thin-Line Combo Pack, and NobleSealant



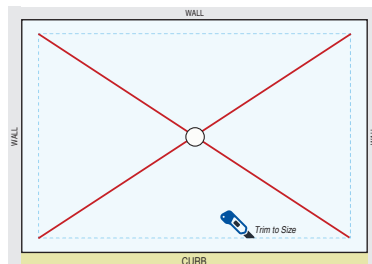
48" x 48" Center Drain Kit
#4720

INCLUDES: 48"x48" Composite Base,
150 sq ft of ValueSeal, (1) 48" curb,
Thin-Line Combo Pack, and NobleSealant



72" x 72" Center Drain Kit
#4820

INCLUDES: 72"x72" Composite Base,
200 sf of ValueSeal, (2) 36" curbs,
Thin-Line Combo Pack, and NobleSealant



48" x 72" Center Drain Kit
#4520

INCLUDES: 48"x72" Composite Base,
200 sq ft of ValueSeal, (2) 36" curbs,
Thin-Line Combo Pack, and NobleSealant



Sloped Base Pieces

Patents Pending

The multi-sloped design
seamlessly integrates with
Noble Company's FreeStyle
Thin-Bed Drain™



ValueSeal® Waterproofing Sheet Membrane

Ultra-thin waterproofing
membrane designed
for bonded applications.



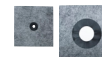
Noble Solid Curbs

Durable, preformed curbs
are easy to install.



Noble Thin-Line™ Inside and Outside Corners

A fast and easy way
to protect against leaks
in corners.



Noble Thin-Line Pipe Collar and Mixing Valve Collar

Convenient, easy-to-use
accessories to seal
around pipes and valves.



NobleSealant

Polymeric sealant for
seaming waterproofing
sheet membrane to
drain body.



Barrier-Free Installation

- Cut and remove subfloor per shower size
- Add support at floor joists to lower subfloor
- Add new subfloor
- Install Thin-Bed Drain
- Install ProBase II Base
- Install CBU
- Waterproof

See www.noblecompany.com for detailed
instructions for barrier-free installations

CUSTOM SIZES AVAILABLE UPON REQUEST



7300 Enterprised Drive, Spring Lake, MI 49456 · (800) 878-5788 · Fax: (231) 799-8850 · www.noblecompany.com

® Registered Trademark of Noble Company ™ Trademark of Noble Company © 2020 Noble Company

File #PB032020-14 | 03/20 Supersedes #PB012020-08