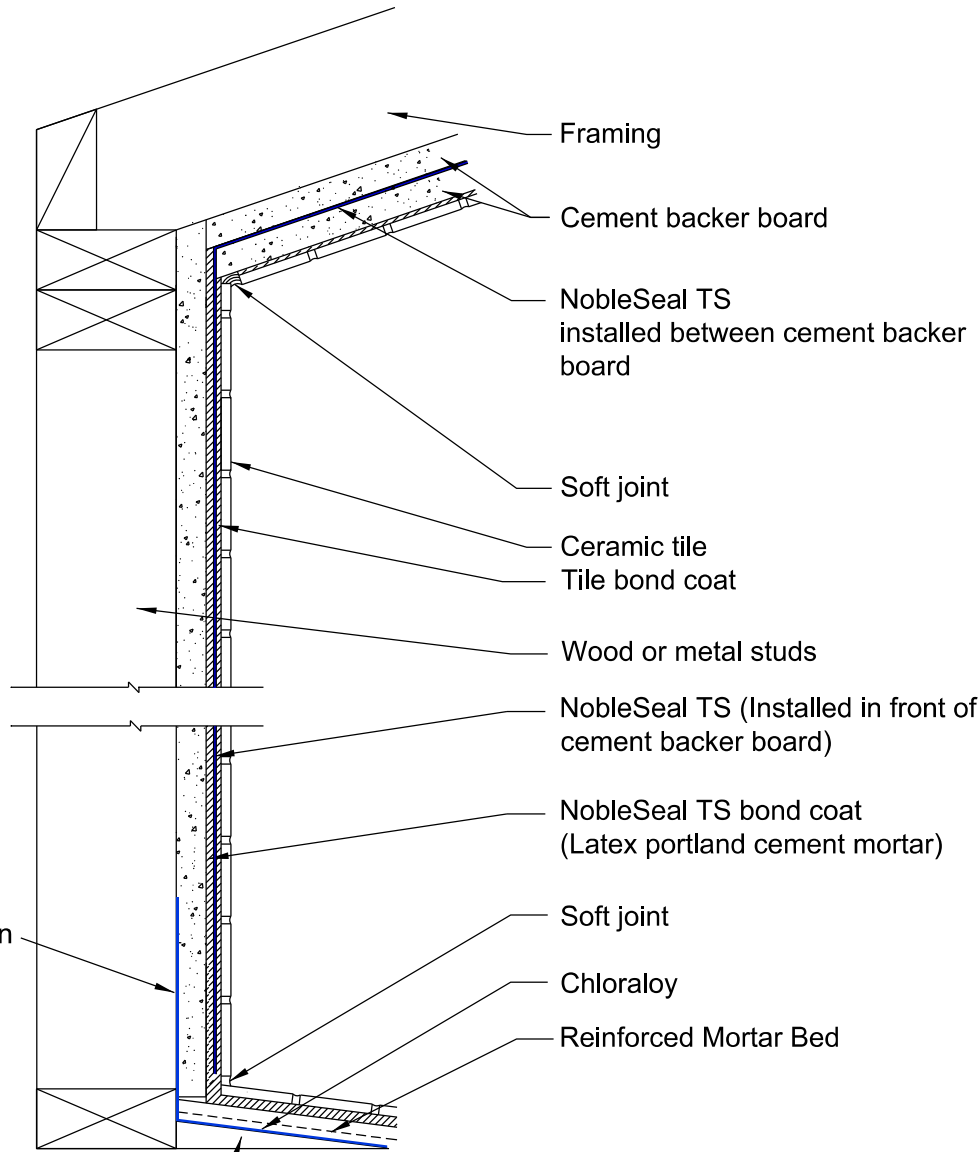


Steam Room Detail, NobleSeal TS, Chloraloy



Install Chloraloy minimum of 3" higher than finished dam.

Pro Slope or Sloped fill (1/4" per foot minimum to drain)

Not to Scale

Note:
 1) Follow TCNA Details EJ171 for movement joint placement and SR614 for general construction details excluding membrane placement on ceiling.

Noble Company
 7300 Enterprise Drive, Spring Lake, MI 49456
 Phone: 231-799-8000
 Toll Free: 800-878-5788
 Fax: 231-799-8850
 Email: sales@noblecompany.com

Revision Date:				
	Δ	Δ	Δ	Δ

Project:
 Product installation Details
Drawing Title:
 Steam Room Detail, NobleSeal TS, Chloraloy

Drawn By: RJL

Date: Jun, 16th 2014

File Name: Steam Room Detail, NobleSeal TS, Chloraloy

Sheet: